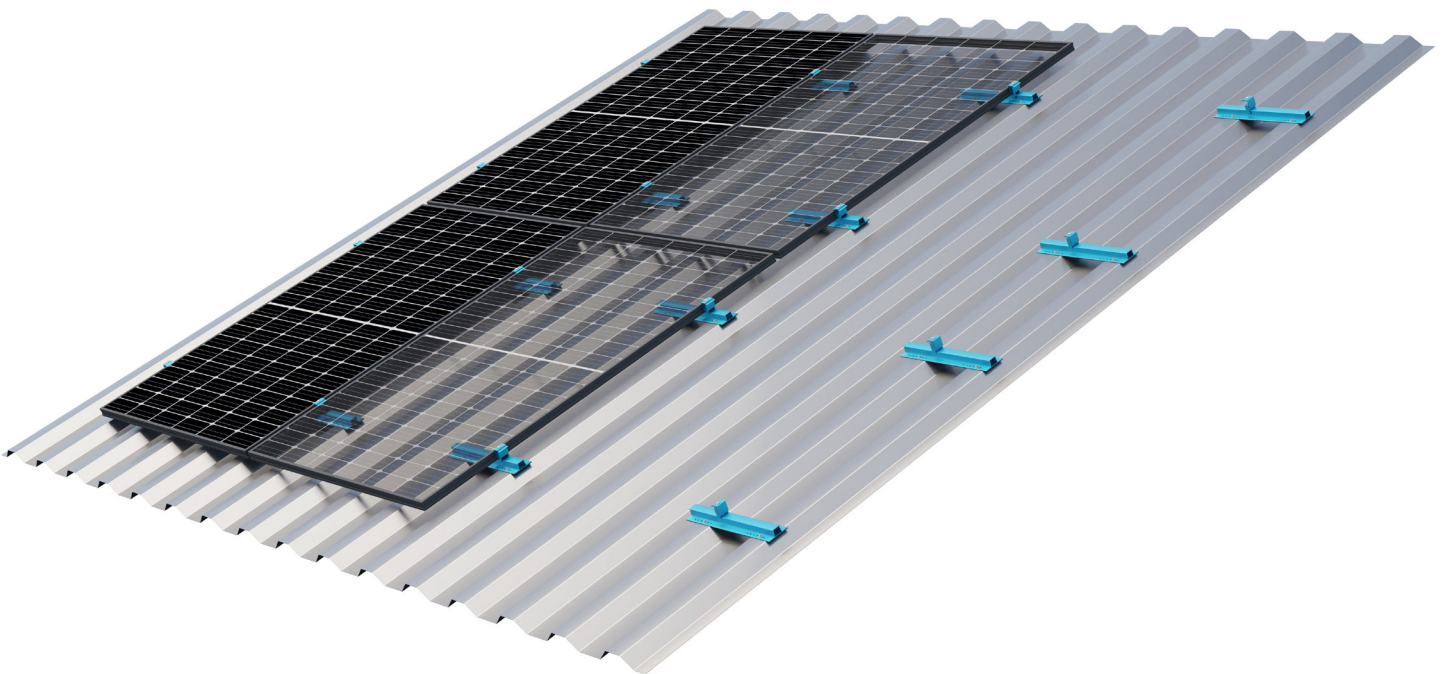




## TRAPEZOIDAL SHEET METAL RAIL AK

Mounting rail for trapezoidal sheet metal roofs



### Save material and logistics costs

All S:FLEX fastening systems for trapezoidal and corrugated sheet metal roofs combine a reliable roof connection and high rigidity suitable for heavier loads with significantly reduced material usage. This enables you to achieve higher margins for your projects.

Thanks to its length of 395 mm, the trapezoidal sheet metal rail AK l=395mm is easy to handle on the roof and easy to transport and store. Alternatively, the rail is also available in a length of 3150 mm.

### Fast fitting, uncomplicated installation

The S:FLEX trapezoidal sheet metal rail AK complete is supplied pre-fabricated with 24 holes (5 mm) and EPDM sealing tape covered bottom side.

Using chip-free sheet metal screws, it can be quickly and directly fastened to the raised seams in one step and without pre-drilling.

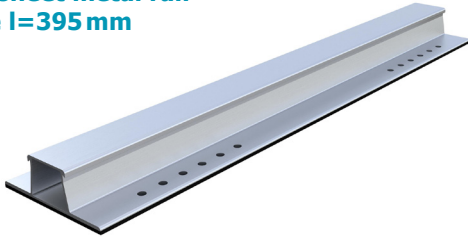
The PV modules are attached in portrait mode with one-click clamps that make installation a snap.

# TRAPEZOIDAL SHEET METAL RAIL AK

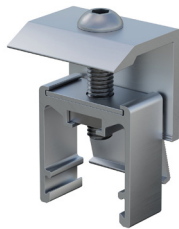
Mounting rail for trapezoidal sheet metal roofs

## Technical Data

**Trapezoidal sheet metal rail  
AK complete l=395 mm**



**End clamp  
AK II Klick 30-50 A**



**Mid clamp  
AK II Klick 30-50 A**



<b>Application</b>	Trapezoidal and corrugated sheet metal
<b>Module type</b>	Framed modules, all common sizes
<b>Module orientation</b>	Portrait
<b>Roof pitch</b>	75° max.
<b>Module field length</b>	7 m max.
<b>Max. load</b>	Up to 5.4 kN/m <sup>2</sup>
<b>Fastening</b>	Screwed onto raised corrugations
<b>Contact surface seams</b>	15 mm min. (when used on corrugated sheet metal, the fastening is made on the high point of the corrugation crest)
<b>Sheet metal thickness</b>	Sheet steel min. 0.5 mm Aluminium min. 0.5 mm
<b>Material</b>	Aluminium EN AW 6063 / T6, Stainless steel, EPDM seals
<b>Colour</b>	Natural, extruded finish

